

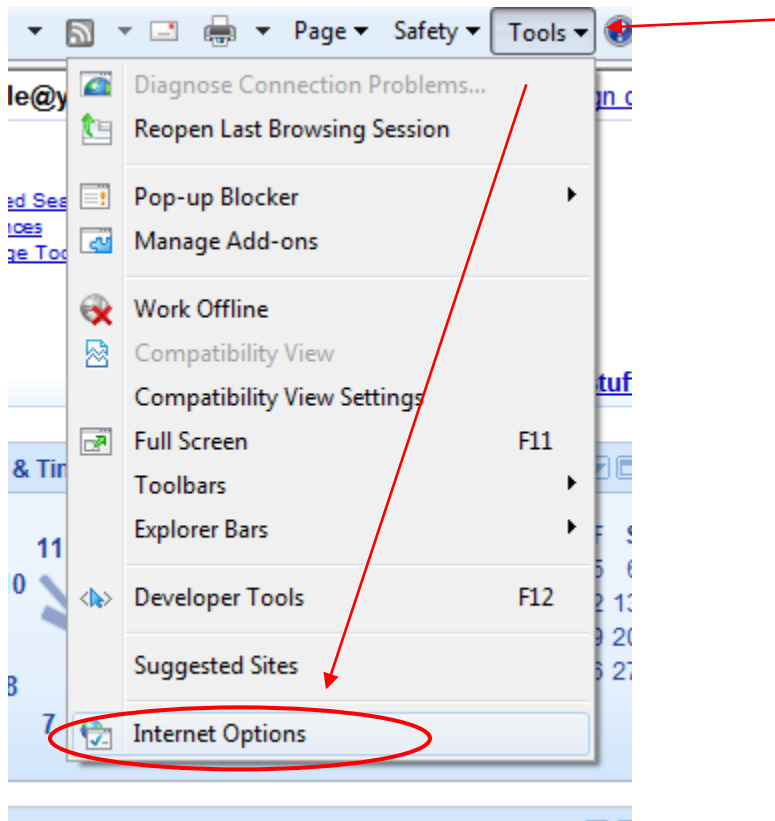
ASPPA has been made aware of an issue regarding Internet Explorer version 8 (IE 8) and accessing secured pages on the ASPPA website. Users are reporting messages that state “Navigation Canceled” or “Unable to load page”.

With the release of IE8, Microsoft changed many of the security settings in an attempt to provide a more secure and safe browsing experience. The default settings seem to interfere with loading secure pages and generate the errors listed above.

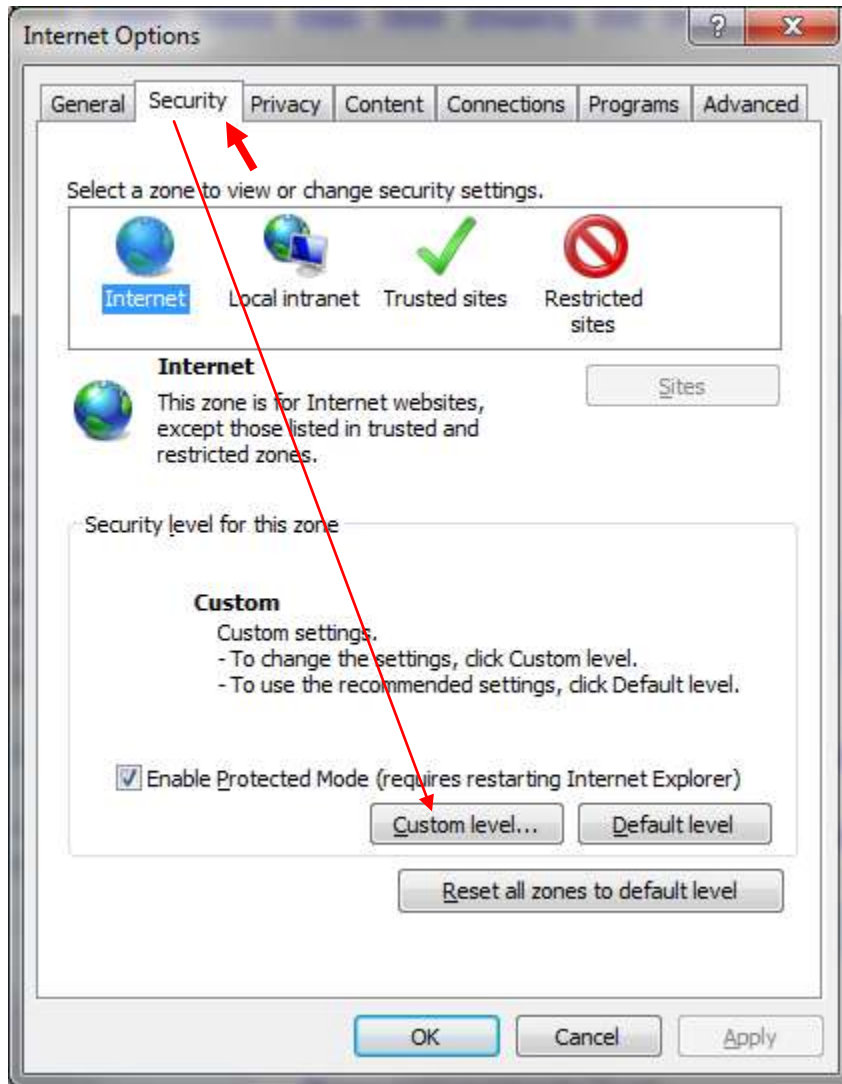
In addition to those errors, you may receive a popup message stating "This page contains both secure and non-secure items. Do you want to display non-secure items?" This security message is IE generated and can become annoying. And in some cases, if the “No” is selected, the page will not display.

To resolve this issue and allow access to the secure pages on ASPPA’s website, please have your IT department perform the following steps:

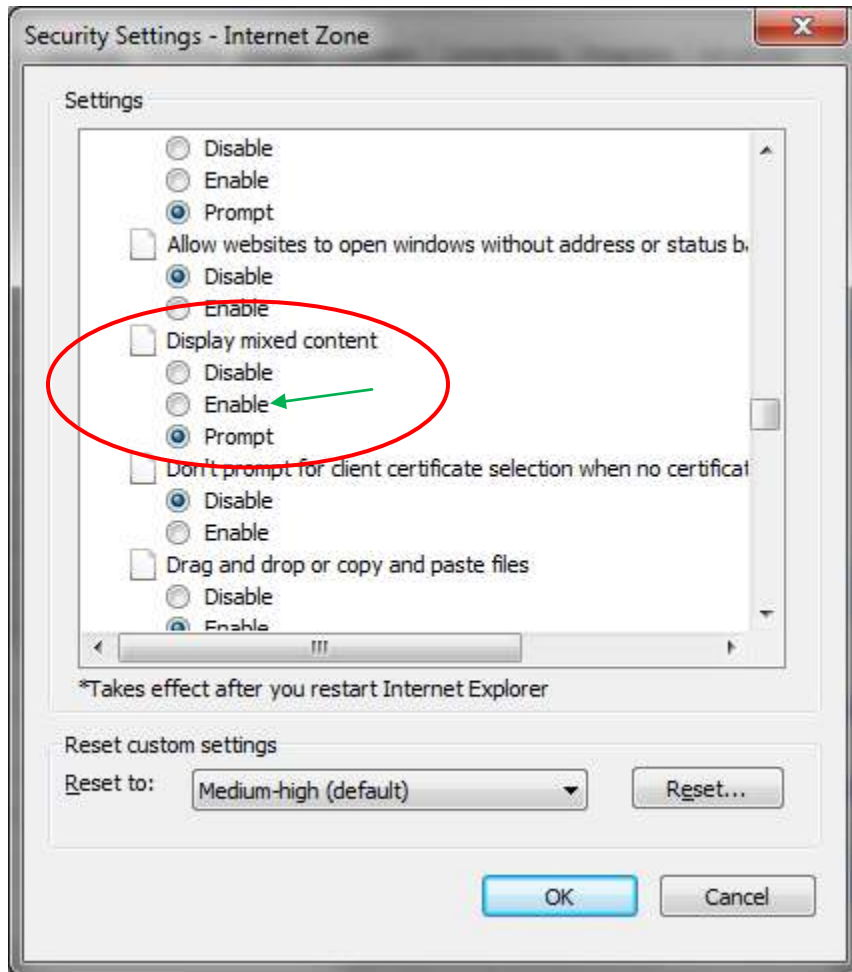
1. Open IE 8 and click on Tools and then Internet Options.



2. Select the "Security" tab and then click on the "Custom level" button.

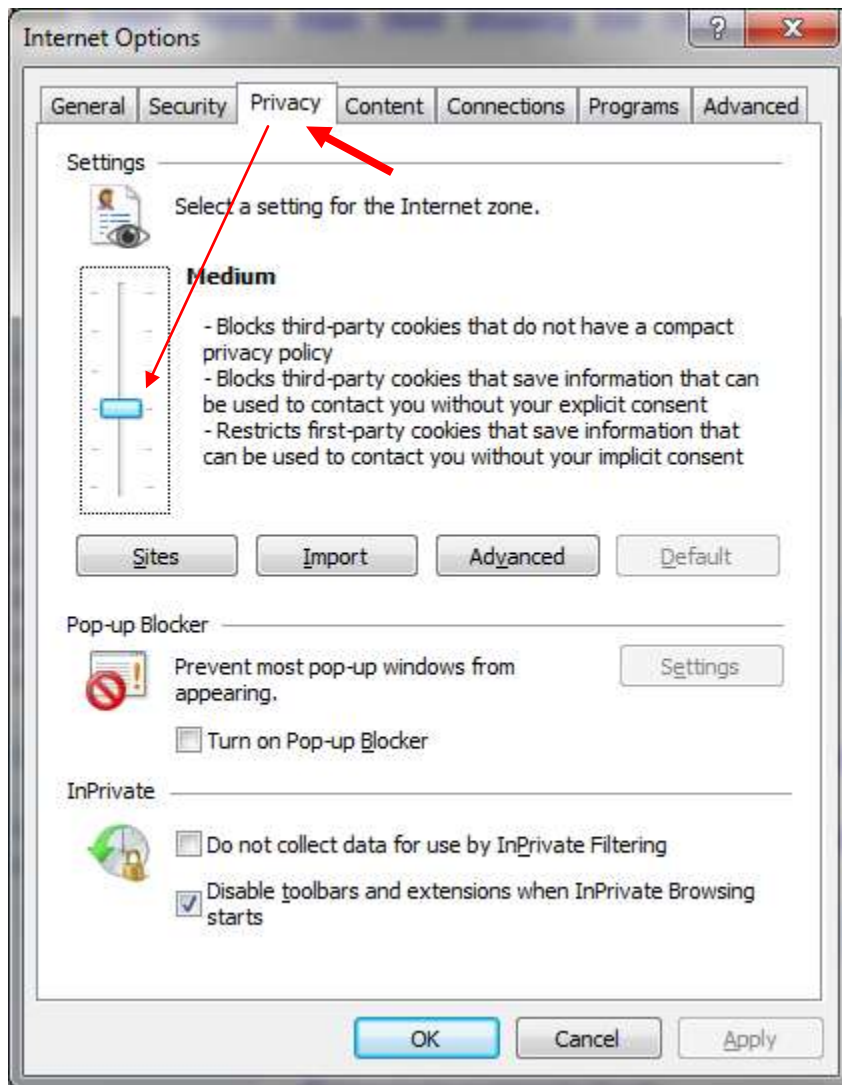


3. Scroll down until you see the option: "Display mixed content". Select the option "Enable".



4. Click "OK". You will get a "Security Warning" pop-up. Click "Yes".

5. Now click on the “Privacy” tab. Move the slider to something below MEDIUM HIGH to allow the pages to display.



6. Click “OK” to complete the process and save the settings. You will need to close all open IE 8 windows and start fresh for the changes to take effect.